

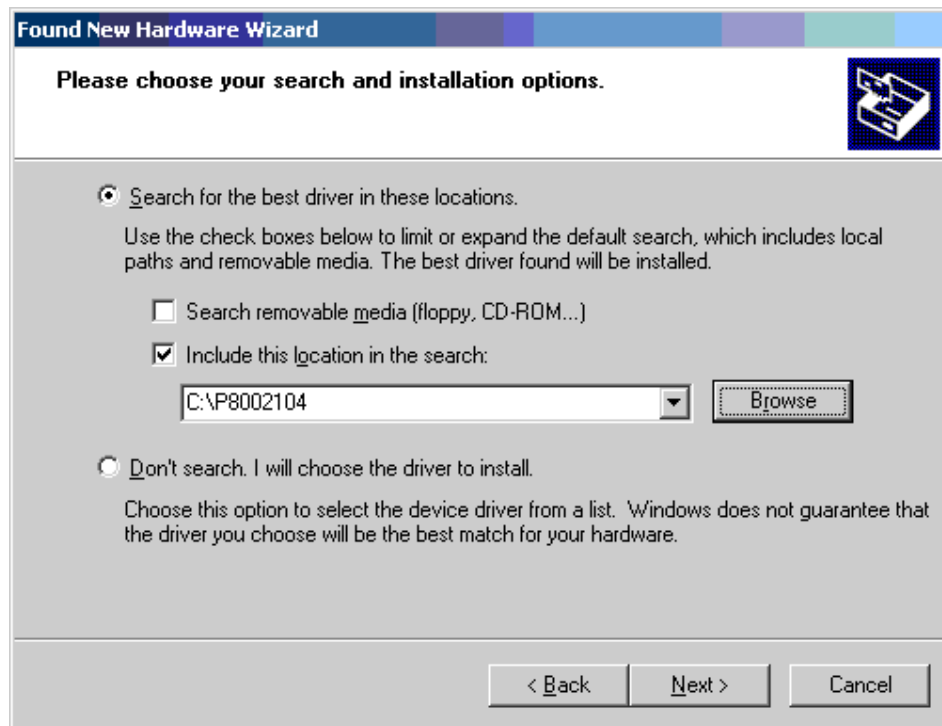
# USB drivers installation

If you got our installation-CD	If you don't have our installation-CD
Insert the disc	<p>Download the driver suitable for your Windows</p> <p><a href="#">P8002104</a> Certified driver for Windowx XP and 2000</p> <p><a href="#">R9052151</a> The latest driver for Windows XP, 2000, ME and 98</p> <p>The drivers will be downloaded in a self- extracting file which copies itself into an directory with the same name as the file.</p> <div data-bbox="716 604 1370 1020" style="border: 1px solid blue; padding: 5px;"><p><b>WinZip Self-Extractor - P8002104[1].exe</b></p><p>To unzip all files in P8002104[1].exe to the specified folder press the Unzip button.</p><p>Unzip to folder: <input type="text" value="C:\P8002104"/> <input type="button" value="Browse..."/></p><p><input checked="" type="checkbox"/> <u>O</u>verwrite files without prompting</p><p><input type="button" value="Unzip"/> <input type="button" value="Run WinZip"/> <input type="button" value="Close"/> <input type="button" value="About"/> <input type="button" value="Help"/></p></div> <p>Run the self-extracting file and extract it by pressing "Unzip"</p>

Connect your MP3.5/3.6USB or USB Phoenix/Smartmouse interface to a free USB-port. A guide will automatically start in Windows and this picture will appear on your screen:



Pick **"Install from a list....(advanced)"** and press **Next**



Pick **"Search for best drivers in this location"**

If you got our installation-CD	If you don't have our installation-CD
<p><b>Choose:</b></p> <p><b>"Search removable media floppy, CD-rom"</b></p>	<p><b>Choose:</b></p> <p><b>"Include this location in the search"</b></p> <p>and then pick the directory in wich the self-extracted file was extracted to by typing the path or by pressing <b>Browse</b>.</p>

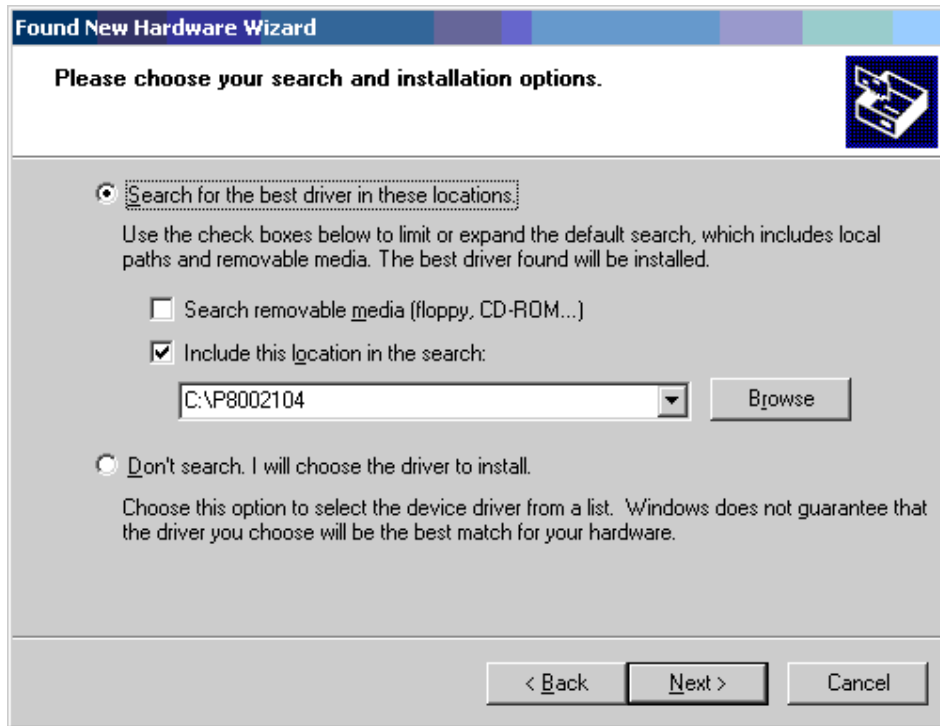
Press Next to start copy the **first** driver.  
When the first driver have been installed this window will appear:



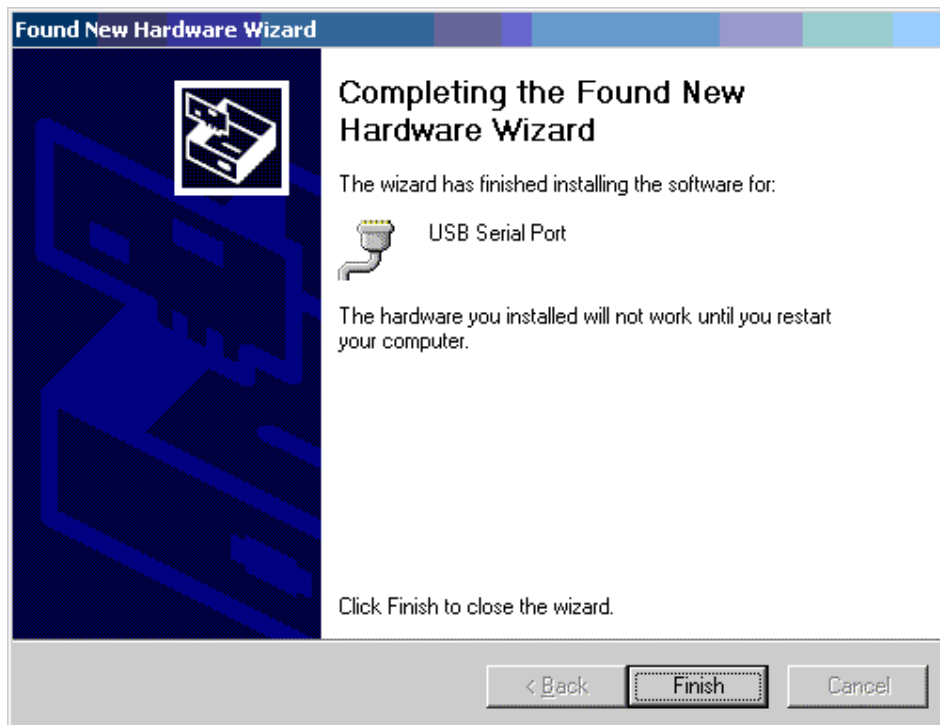
Press **Finish**



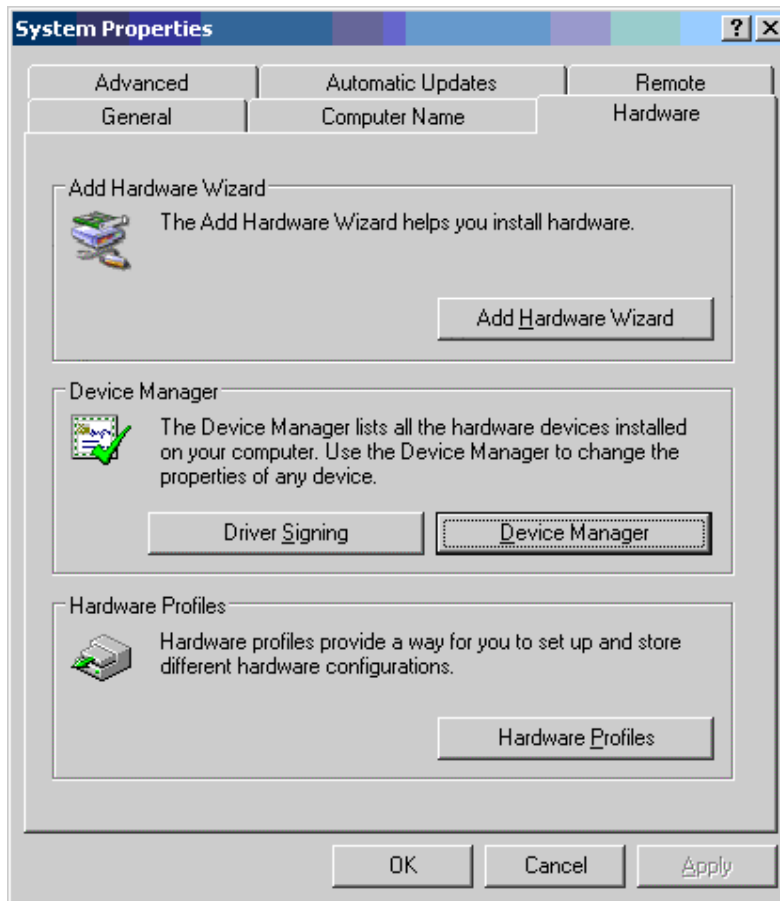
A new guide starts automatically for the installation of the second driver.  
Pick **Install from a list...(Advanced)** and press **Next**



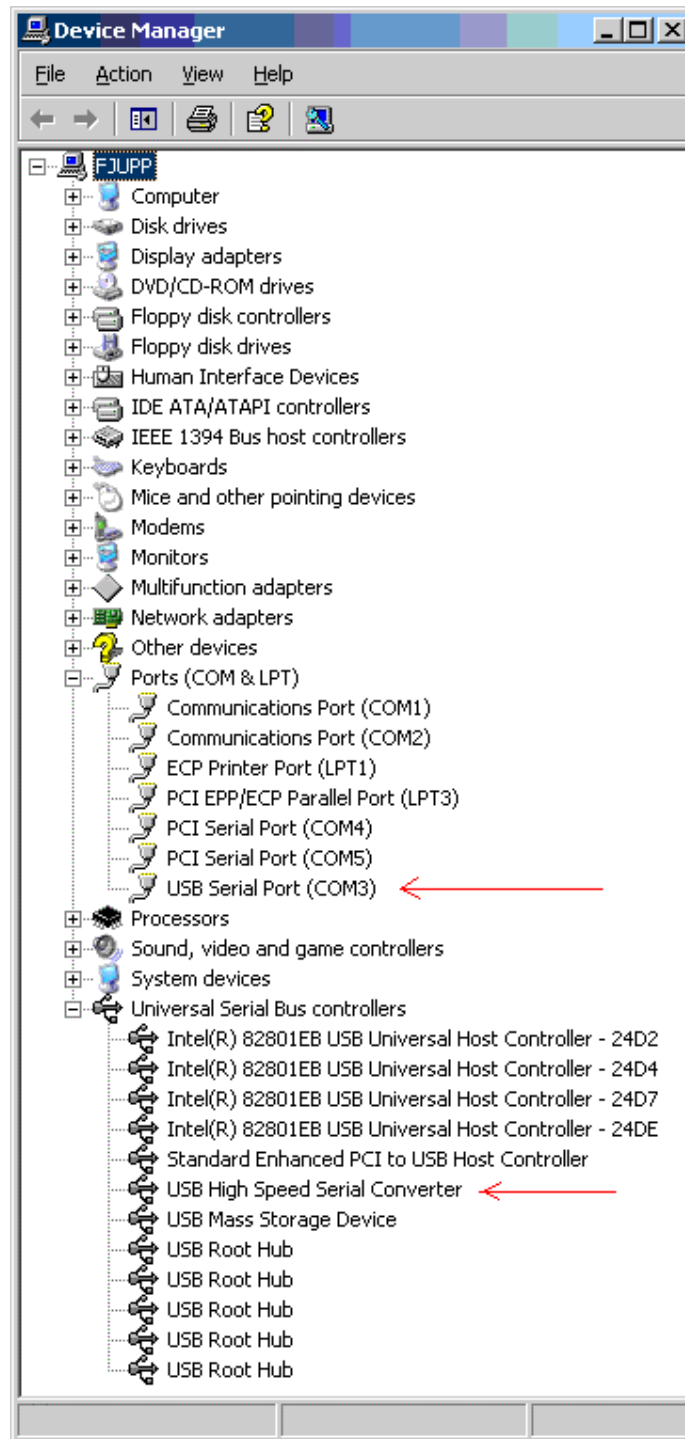
The settings from the previous driver should remain so just press **Next**



Press **Finish**. Both drivers are now installed  
Now open the device manager by right click on **My computer** and choose **Properties**



Press **Hardware** and then **Device manager**.



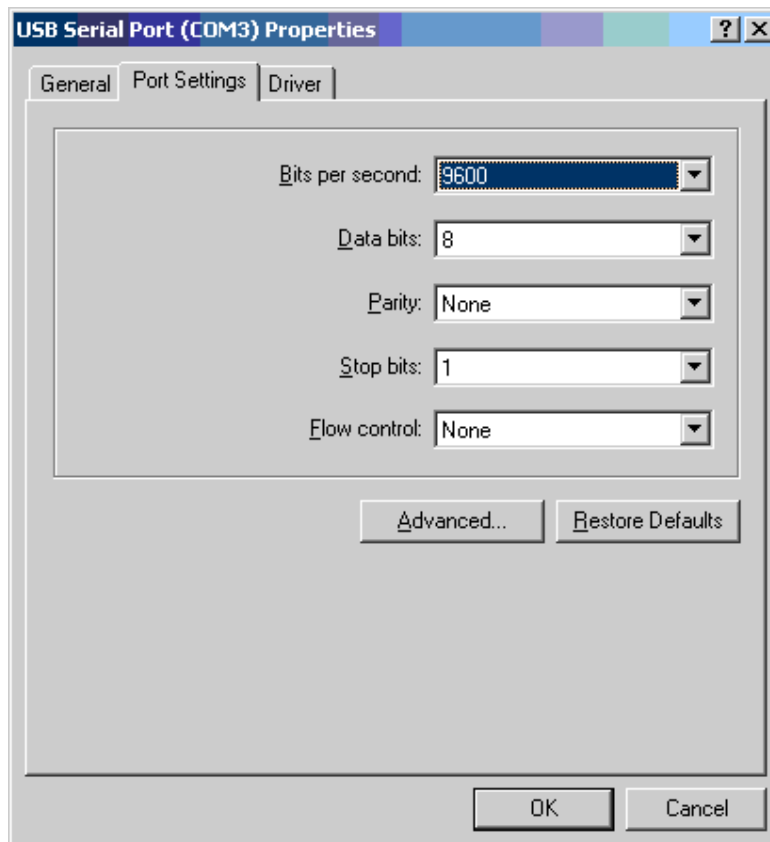
Now you can see that two new units have been installed, here shown by the two red arrows.

---

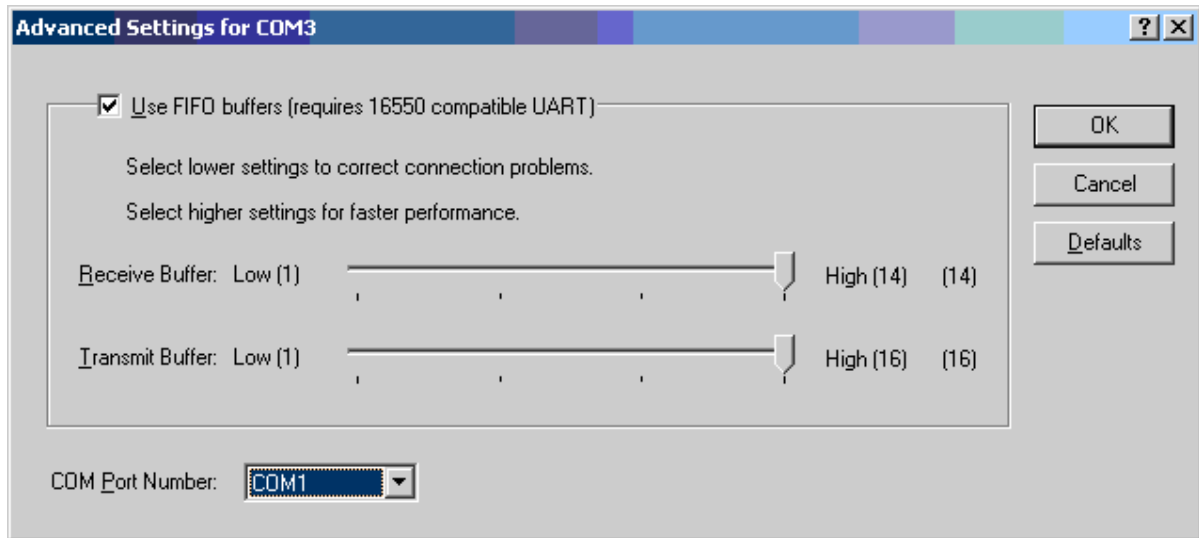
Some softwares demands that the programmer have to be connected to COM 1-4.  
If so you have to rename the COM-port. If you want to do that please follow these instructions:

**If you already have a COM-port that uses the requested COM-port number:**

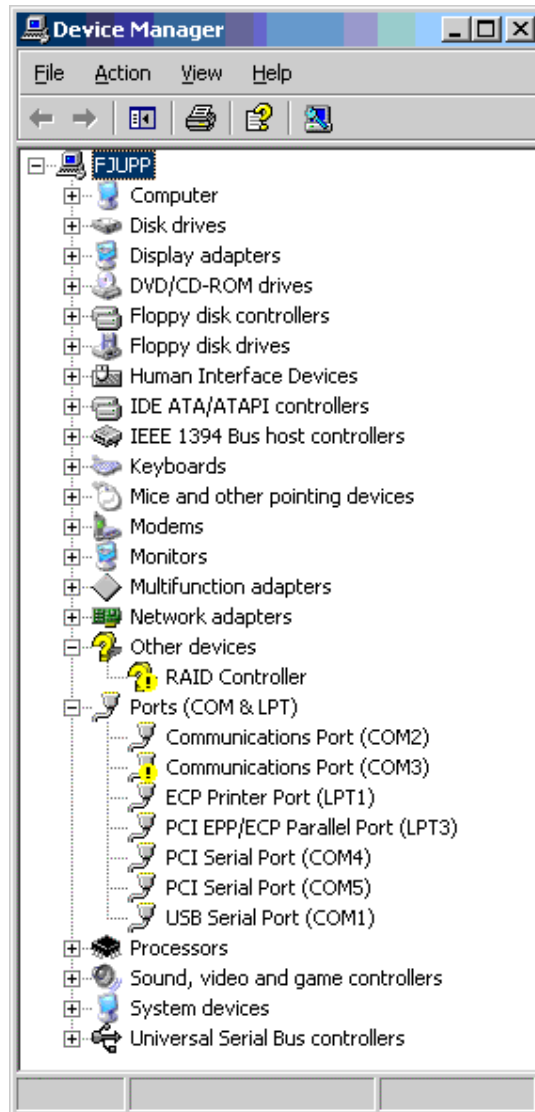
- Right click on the communication port for which you want your programmer to use.
- Pick **Inactivate** (not on Windows98 or ME)
- A red cross appear at the actual communication port (not on windows98 or ME)
- Right click on the same port and choose inactivate
- The COM-port will now be removed from the list



Right click the **USB Serial Port(COM X)** and choose **Properties**.  
Under **Port settings** press **Advanced...**



Pick the requested COM-port number and press **OK**  
Note! This window looks different for the non certified driver.



Click **Action** in the menu and choose **Search for hardware changes**. If you earlier have chosen to remove another communication port the computer will now find it again and give it a new COM-port number.

**Done!**

***Don't forget to pick the right COM-port in the software you wish to use with the programmer.***